



LPIS

Land Parcel Identification System

WHAT IS IT?

Innovative and powerful set of Java-based tools for editing the graphical and descriptive information on usage of agricultural land, combined into an Internet-based system, which covers all aspects of the Land Parcel Identification System - LPIS.

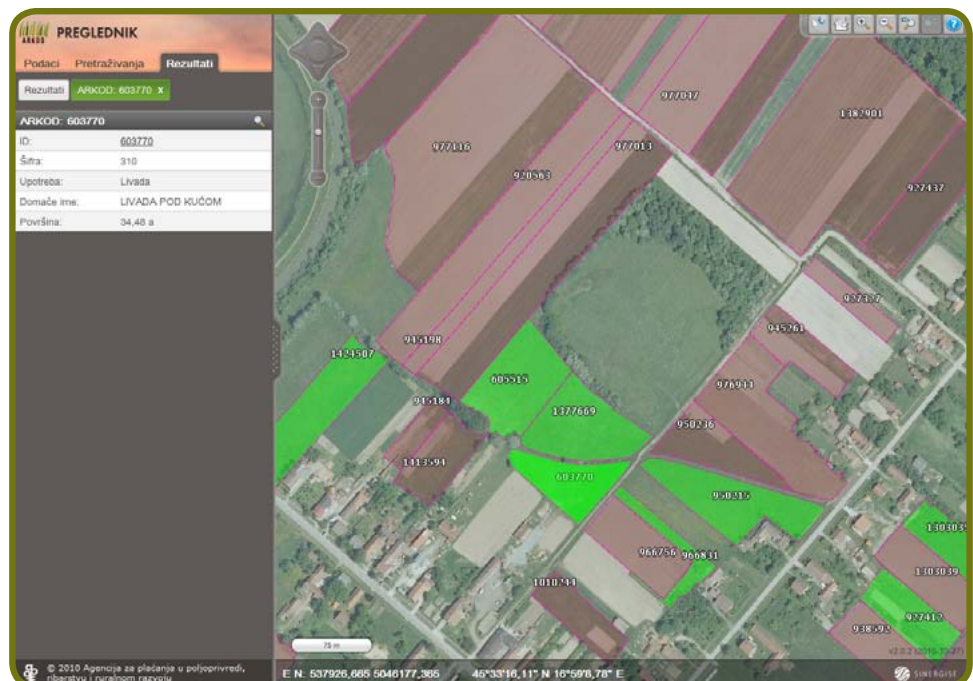
The LPIS system and especially the LPIS database are among the most important parts of IACS (Integrated Administration and Control System) software solutions, allowing accurate calculation of area-based payments as well as providing a means to control farmers' applications and resolve disputes.

Due to the complexity of the task, it was necessary to employ **internet technologies, Oracle spatial database, distributed deployment and modular design** into the system architecture.

BENEFITS

- Data integrity
- Low maintenance and installation effort
- High performance of the central system
- Low bandwidth requirements
- Ease of use

WEB GIS BROWSER,
SHOWING LAND
PARCELS COLORED
ACCORDING TO
THEIR LAND USE





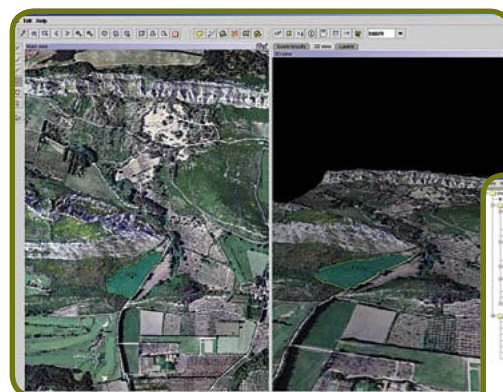
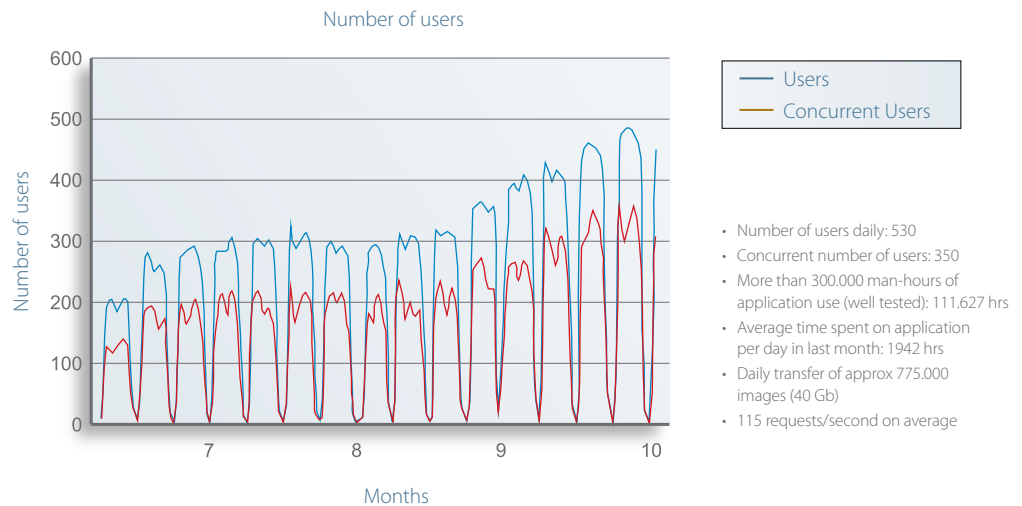
LPIS

Land Parcel Identification System

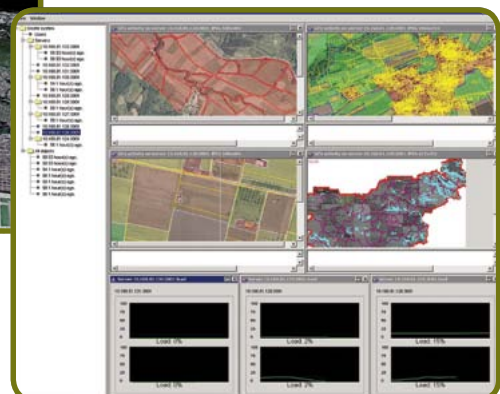
LPIS IS POSSIBLY
ONE OF THE MOST
COMPLEX AND
EFFECTIVE IACS
SUB-SYSTEMS

- Graphical nature of the data and a variety of different data formats involved,
- Distributed nature of the whole operation,
- Large number of users from several hundred offices, simultaneously accessing and updating the data .

CHART: LPIS USAGE
STATISTICS FROM
SLOVENIA (2006)



◀ Users side



Administrators side ▶