



# GISELLE

## WHAT IS IT?

**Giselle** is a pure **web-based topology** editor that offers GIS functionalities for distributed systems with hundreds of users - it often occurs that a large amount of spatial data has to be produced in a relatively short time, demanding simultaneous digitizing of geographic objects by a large number of users.

**With Giselle you can easily solve that kind of problem!**

The system is **user-friendly** for digitizing and managing the data, easily available, reliable, safe, and has a **low total cost of ownership**.

**Giselle** is a framework, which enables users to **manage polygons of the underlying map** as well as to **add other graphical elements** such as text, points and lines with an applet from within a browser.

EDITING,  
MANAGING,  
AND VIEWING  
DATA BY THE  
GISELLE EDITOR

Tools

Layers

Edit polygon directly in browser – no plug-in required

Dynamic zoom and resizing of image

View window

Query tables

LPIS ID	HOLDING ID	NAME	LAND USE	FRIENDLY NAME	LAND USE No.	GRAPH. AREA (ha.m <sup>2</sup> )
3085119	1300	9	-11009			83.3948
3112679	1211	1	Inicialni splan 2002			274.6098

## KEY FEATURES

- HTML-based editor (PublicEditor) for the widest usage (public editor, Consumer-to-Government, etc.),
- JAVA-based editor (DistriDigitizer) – data capture with real-time remote control of the editing process,
- ImageMaster – our own optimized image server,
- Application server,
- Communication module,
- Management console
  - Administration,
  - Load balancing,
  - Mirror user actions (for support purposes),
- Deployment tools (installer, packager ...).

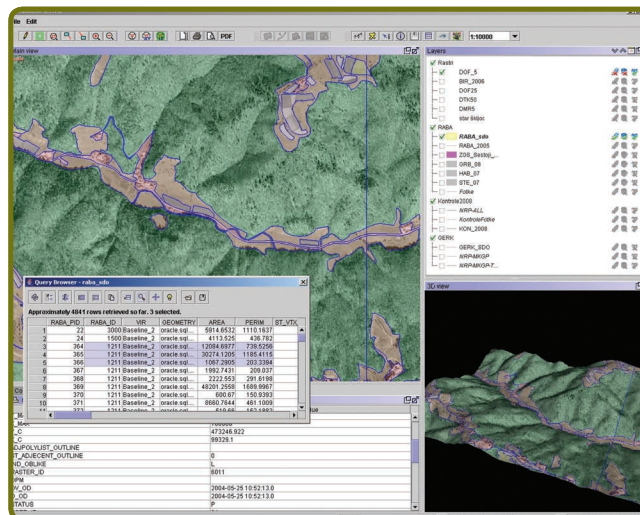


# GISELLE

## ENJOY GISELLE

- **Giselle** is compliant with the standards of the field (**OGC, XML, CORBA, Web services**) and can therefore be easily integrated into existing systems.
- The system was based on the assumption that it would be used by **diverse groups of users with different levels of technical, IT or GIS experience**. It was very important to make the **user interface intuitive and simple to use**. The system had to be **cost effective**, so it had to be based on basic web technologies and PCs without additional expensive equipment.

## DISTRIDIGITIZER - ADVANCED GIS WEB EDITOR



## MANAGEMENT CONSOLE: LOAD BALANCING ← USER SUPERVISION ←

